



# Extending the Life of Windows Server 2003 Machines

Presented By:  
Jay Butler – Senior Technical Consultant  
Safe Systems, Inc.

# Legacy Environments

- Primary File/Print Servers
- Application/Product Servers
- Mail Server
- Utility/Backup Server
- NAS for Data Backup
- Branch Servers

# Risks for Downtime

- Aging Hardware – Windows 2003
- BackupExec/CPS for Backups
- Archaic Recovery Procedures

# Aging Hardware

- Declining Performance -> unable to meet demand
- Reduced Capacity (C: drive) -> Crash
- Expired Warranty -> No support
- Increasing Risk of failed components (HDD, motherboard, N IC) -> Failure

# BackupExec/CPS

- Good for data recovery only
- Limited Capacity
- Restore Time = Backup Time
- Dependencies/Variables
- High incidence of failed/incomplete backups
- Failed/Incomplete Restore

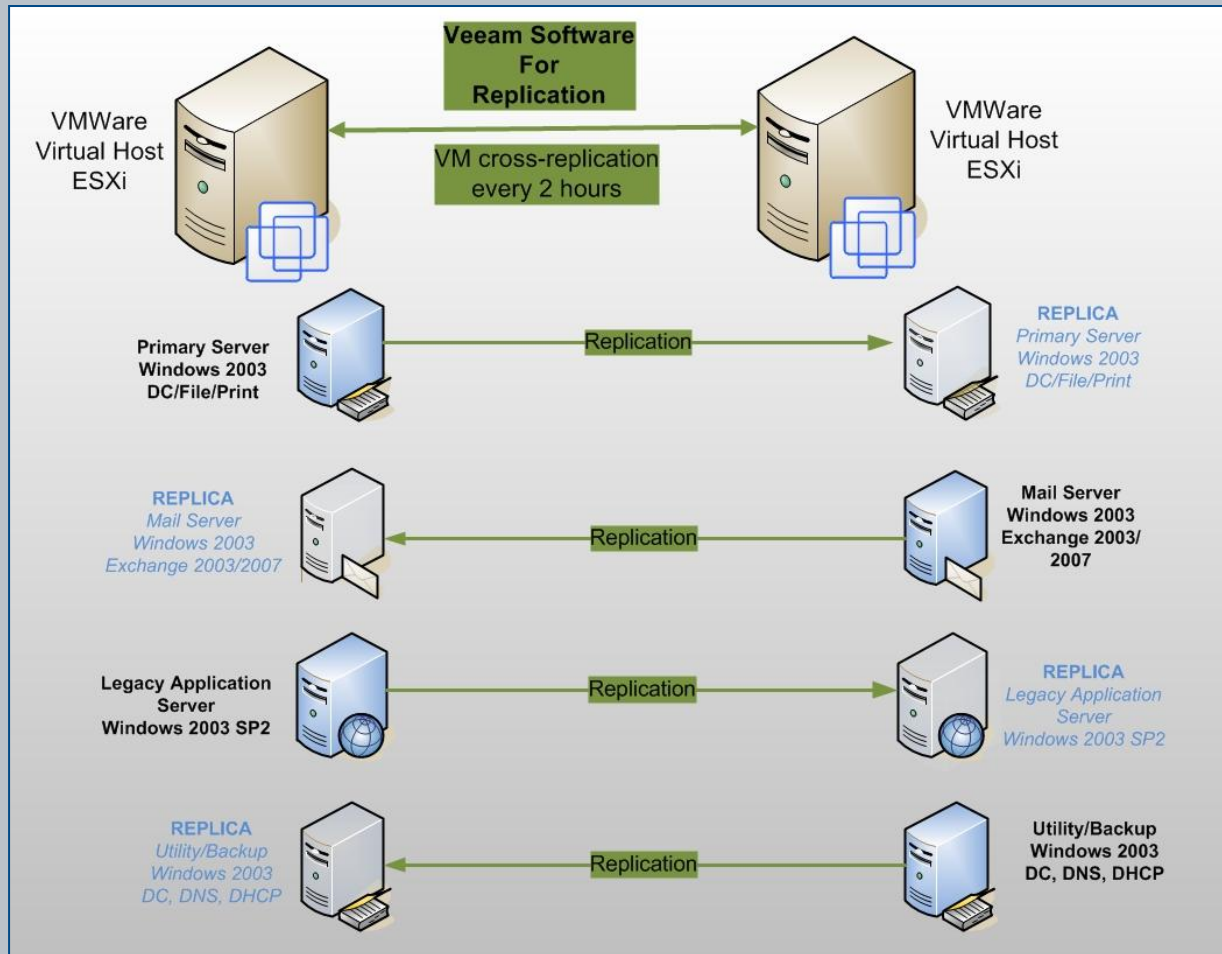
# Legacy Recovery Procedures

- Older server have increased risk to fail
- Cost for failure is high
- Recovery time typically 1-2 days
- Residual impact of recovery

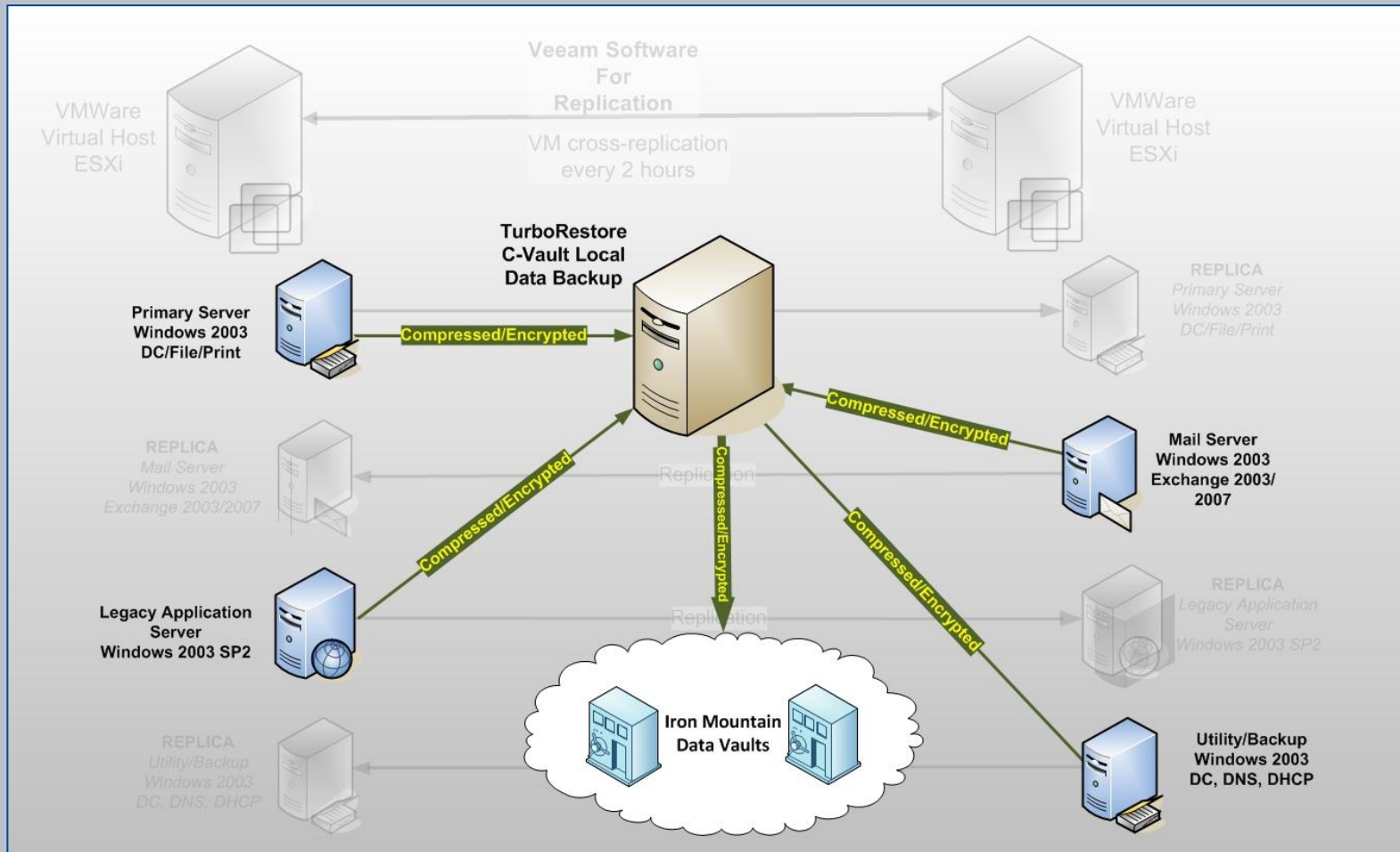
# Exchange Recovery

- Recovery to Backup Server
  - Install Exchange /disaster recovery
  - Configure server
  - Restore database from backup
  - Cross your fingers
- Hosted Email Solution – SSMail
  - Redundant servers assure service
  - Consider backup internet

# Local Failover Model



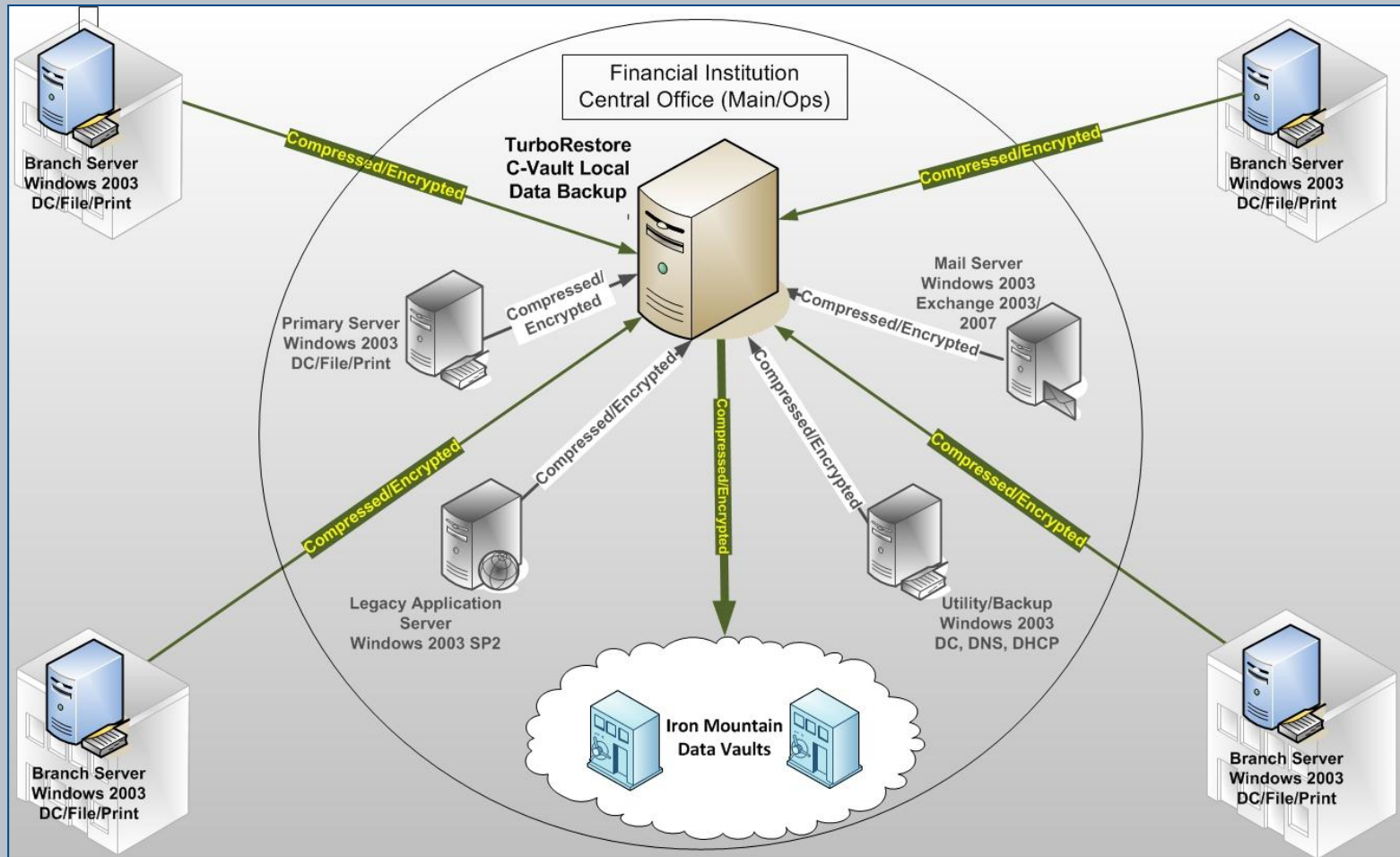
# C-Vault Cloud Backup



# C-Vault Advantage

- Reliable - < 1 % of our support, non-issue
- Scalable – never buy or install BU sw again
- Redundant – Vaults in Utah and Kansas
- Continuous – every 15 mins
- Retentive – 30 days up to 1 year
- User friendly – simple restores
- Managed - we take responsibility

# C-Vault WAN



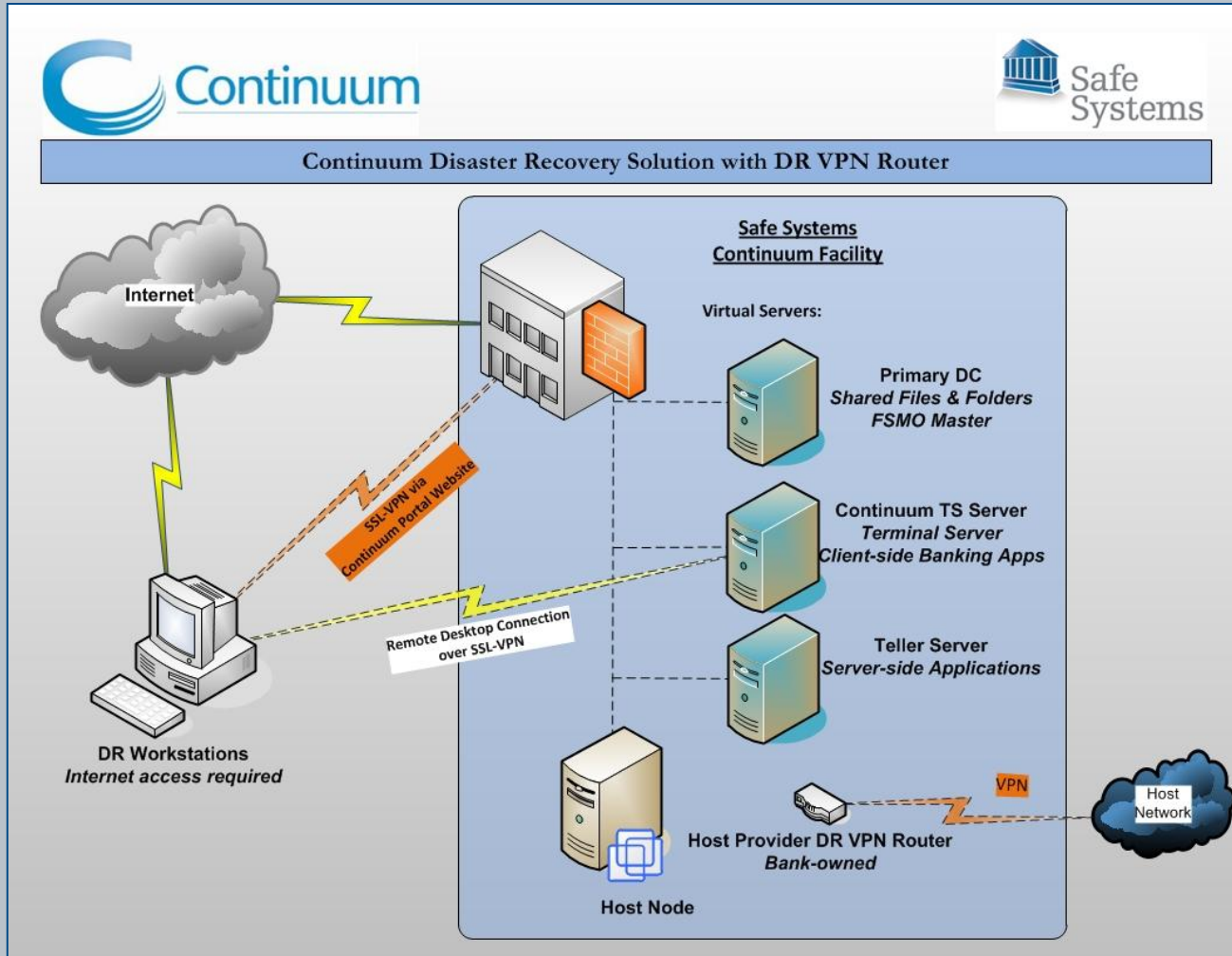
# Review

- Local failover model using VMWare
  - Replace aging hardware economically
  - Low RTO – near instant recovery
- C-Vault for Data backup
  - Proven reliable
  - Refined solution, few “break points”
  - Reliable, simple data restores

# Catastrophic Events



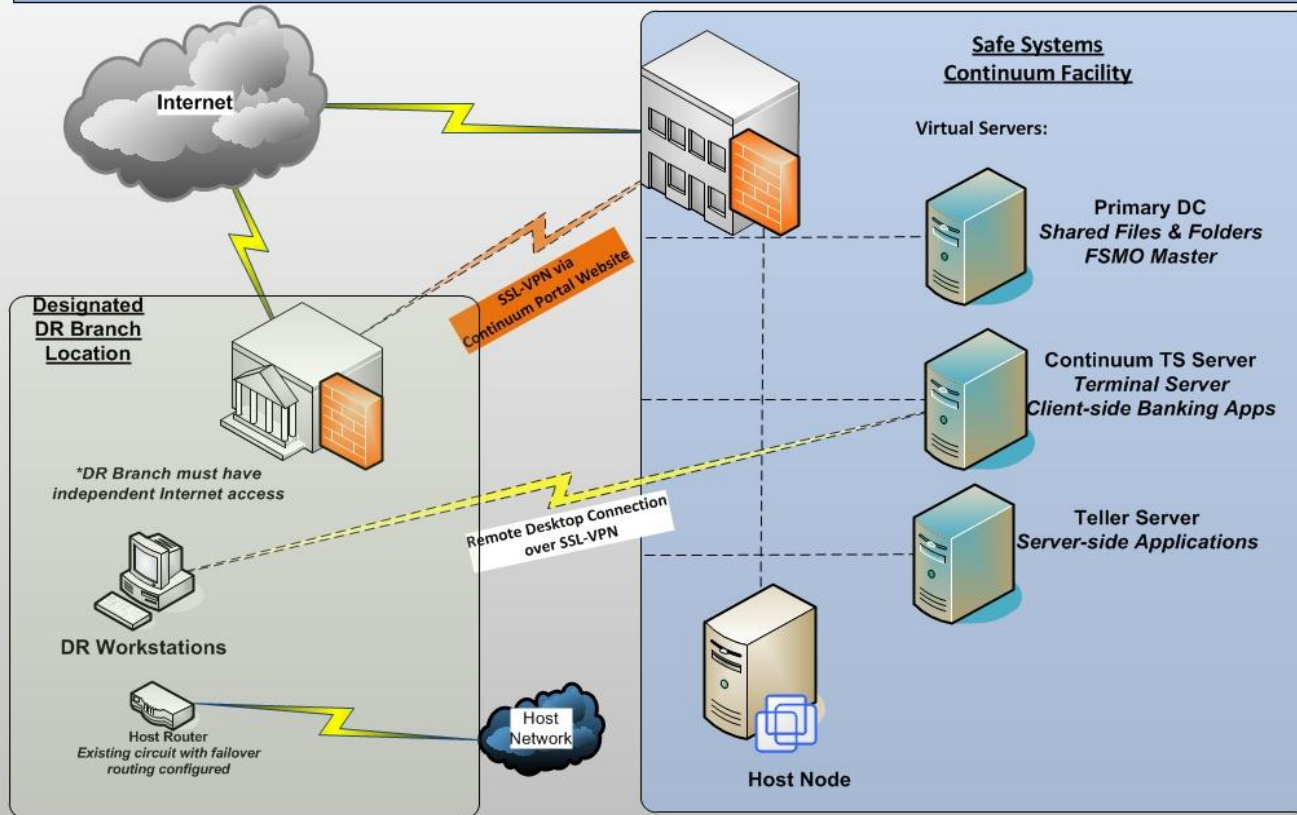
# Continuum – DR VPN



# Continuum – Local Routing



## Continuum Disaster Recovery Solution with Secondary Routing



# SANS – The Next Level

# Weather the Storm

- NetComply Monitoring
- Warranty Renewal
- Environmental
- Limit Change
- Plan for the future